

IKH 7003

Cr₂O₃/TiO₂ 60/40 reaction sintered

Grain Size Distribution

017	-25 +5 μm
020	-30 +10 μm
024	-38 +10 μm
030	-45 +22 μm

Other grain sizes on request

Chemical Composition

Cr ₂ O ₃	base
TiO ₂	38 - 43 %
SiO ₂	< 0.1 %
Al ₂ O ₃	< 0.1 %
Fe ₂ O ₃	< 0.1 %
MgO	< 0.1 %
CaO	< 0.1 %

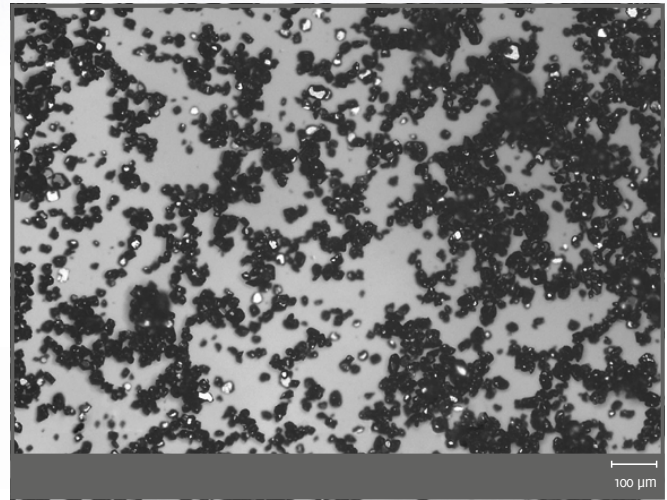
These properties are typical but do not constitute specifications

Coating Properties

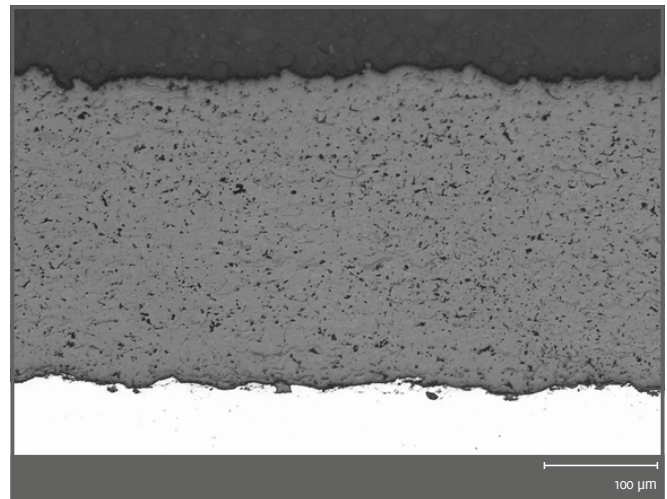
- Hardness: ~ 900HV_{0.3}
- Max. Application Temperature: 500°C
- Melting Point: ~ 1925°C

Property Profile (Coating)

- Wear resistance
- Good finishing properties
- Ductility



Micro section



Micro section

