

## Grain Size Distribution

017	-25 +5 μm
019	-30 +5 μm
027	-45 +5 μm
030	-45 +22 μm
033	-63 +16 μm
036	-90 +45 μm

Other grain sizes on request

## Chemical Composition

Cr <sub>2</sub> O <sub>3</sub>	base
TiO <sub>2</sub>	38 - 42 %
SiO <sub>2</sub>	< 0.3 %
Al <sub>2</sub> O <sub>3</sub>	< 0.1 %
Fe <sub>2</sub> O <sub>3</sub>	< 0.1 %
MgO	< 0.1 %
CaO	< 0.2 %

These properties are typical but do not constitute specifications

## Coating Properties

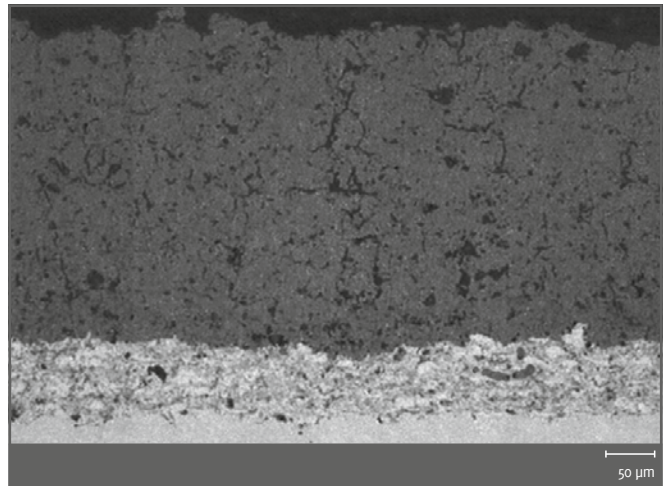
- Hardness: ~ 900 HV<sub>0.3</sub>
- Max. Application Temperature: 500 °C
- Melting Point: ~ 1925 °C

## Property Profile (Coating)

- Wear resistance
- Good finishing properties
- Ductility



Micro section



Micro section

