

### Grain Size Distribution

016	-22 +5 μm
017	-25 +5 μm
027	-45 +5 μm
029	-45 +15 μm
030	-45 +22 μm
031	-53 +16 μm
036	-90 +45 μm

Other grain sizes on request

### Chemical Composition

Al <sub>2</sub> O <sub>3</sub>	base
SiO <sub>2</sub>	< 0.1 %
Fe <sub>2</sub> O <sub>3</sub>	< 0.1 %
MgO	< 0.1 %
CaO	< 0.1 %
TiO	< 0.1 %
Na <sub>2</sub> O	< 0.2 %

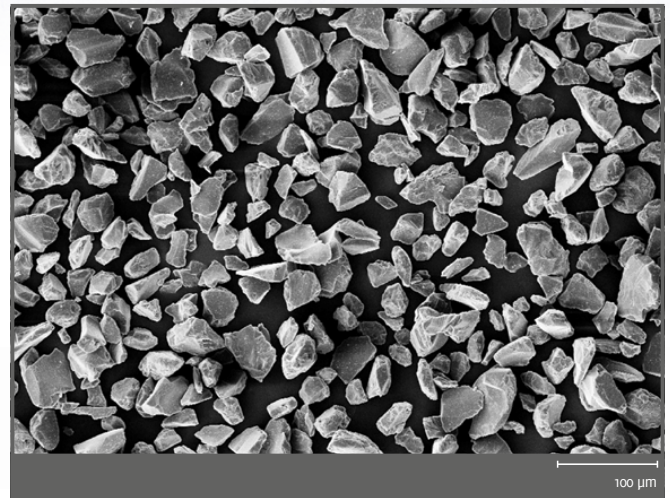
These properties are typical but do not constitute specifications

### Coating Properties

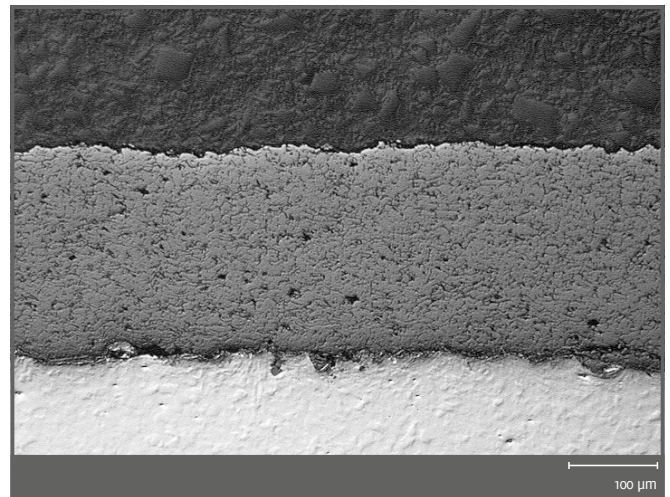
- Hardness: ~ 1300HV<sub>0,3</sub>
- Max. Application Temperature: 1300°C
- Melting Point: ~ 2050°C

### Property Profile (Coating)

- High wear resistance due to high hardness
- Dielectric strength
- Chemical resistance



Micro section



Micro section

